



KV4.1 Polyclonal Antibody

Catalog No	YP-Ab-16456
Isotype	IgG
Reactivity	Human;Mouse
Applications	WB;IHC;IF;ELISA
Gene Name	KCND1
Protein Name	Potassium voltage-gated channel subfamily D member 1
Immunogen	The antiserum was produced against synthesized peptide derived from human KCND1. AA range:558-607
Specificity	KV4.1 Polyclonal Antibody detects endogenous levels of KV4.1 protein.
Formulation	Liquid in PBS containing 50% glycerol, 0.5% BSA and 0.02% sodium azide.
Source	Polyclonal, Rabbit,IgG
Purification	The antibody was affinity-purified from rabbit antiserum by affinity-chromatography using epitope-specific immunogen.
Dilution	WB: 1/500 - 1/2000. IHC: 1/100 - 1/300. ELISA: 1/20000.. IF 1:50-200
Concentration	1 mg/ml
Purity	≥90%
Storage Stability	-20°C/1 year
Synonyms	KCND1; Potassium voltage-gated channel subfamily D member 1; Voltage-gated potassium channel subunit Kv4.1
Observed Band	70kD
Cell Pathway	Membrane; Multi-pass membrane protein. Cell projection, dendrite .
Tissue Specificity	Widely expressed. Highly expressed in brain, in particular in cerebellum and thalamus; detected at lower levels in the other parts of the brain.
Function	domain:The segment S4 is probably the voltage-sensor and is characterized by a series of positively charged amino acids at every third position.,function:Pore-forming (alpha) subunit of voltage-gated rapidly inactivating A-type potassium channels. May contribute to I(To) current in heart and I(Sa) current in neurons. Channel properties are modulated by interactions with other alpha subunits and with regulatory subunits.,similarity:Belongs to the potassium channel family. D (Shal) subfamily.,subunit:Homotetramer or heterotetramer with KCND2 and/or KCND3. Associates with the regulatory subunits KCNIP1, KCNIP2, KCNIP3 and KCNIP4 (By similarity). Interacts with DPP10.,tissue specificity:Widely expressed. Highly expressed in brain, in particular in cerebellum and thalamus; detected at lower levels in the other parts of the brain.,



Background

This gene encodes a multipass membrane protein that comprises the pore subunit of the voltage-gated A-type potassium channel, which functions in the repolarization of membrane action potentials. Activity of voltage-gated potassium channels is important in a number of physiological processes, among them the regulation of neurotransmitter release, heart rate, insulin secretion, and smooth muscle contraction. [provided by RefSeq, Aug 2013],

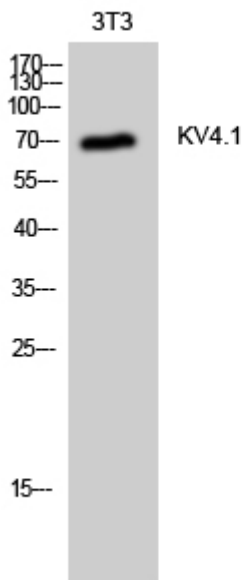
matters needing attention

Avoid repeated freezing and thawing!

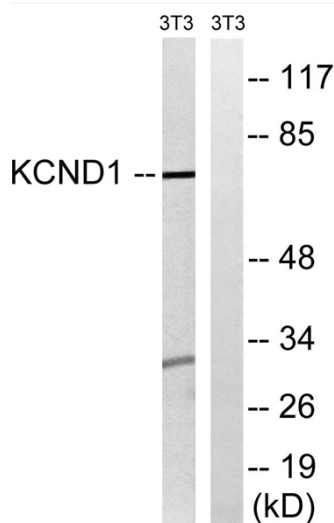
Usage suggestions

This product can be used in immunological reaction related experiments. For more information, please consult technical personnel.

Products Images



Western Blot analysis of 3T3 cells using KV4.1 Polyclonal Antibody



Western blot analysis of lysates from NIH/3T3 cells, using KCND1 Antibody. The lane on the right is blocked with the synthesized peptide.